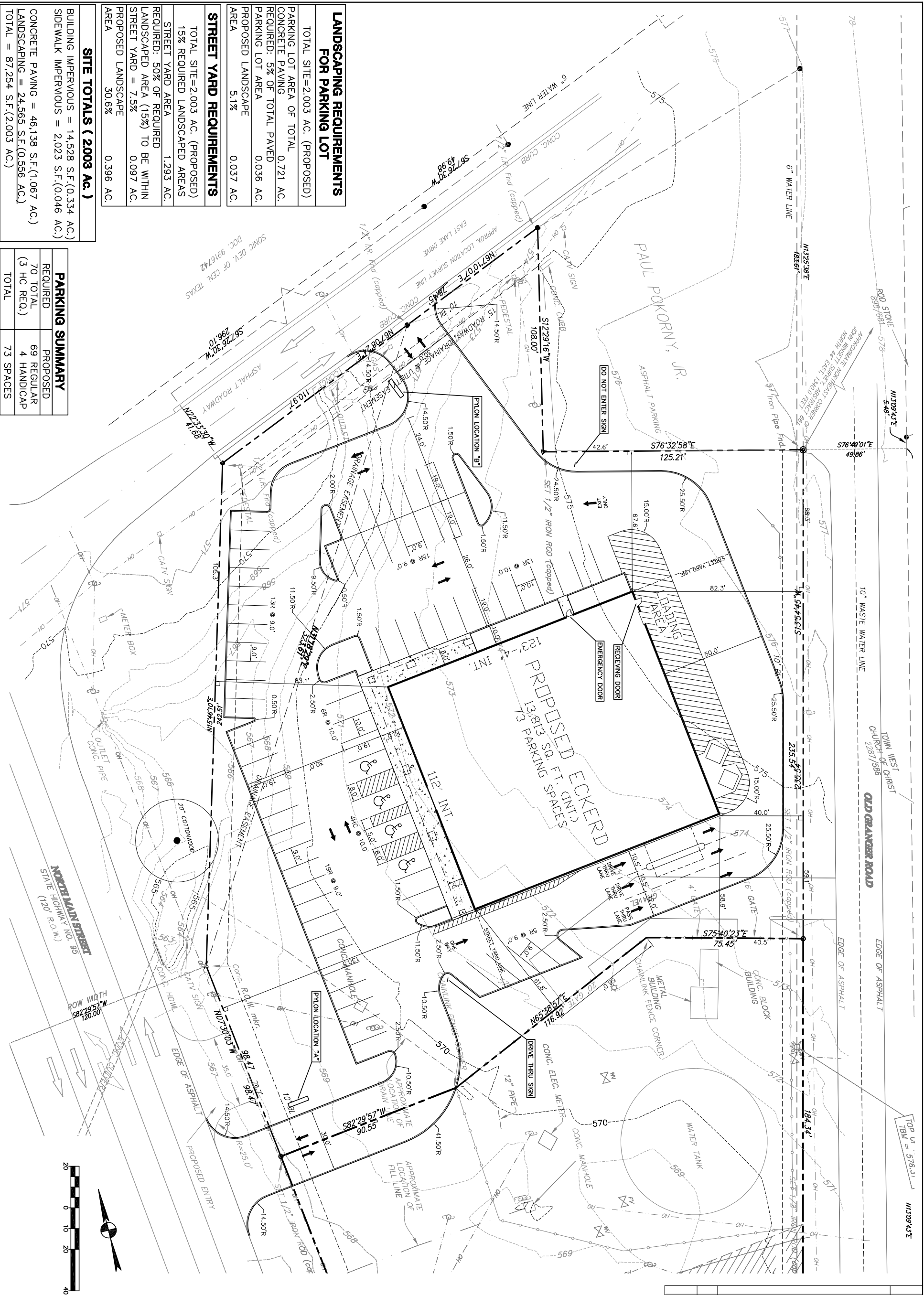


LANDSCAPING REQUIREMENTS FOR PARKING LOT	
TOTAL SITE=2.003 AC. (PROPOSED)	
PARKING LOT AREA OF TOTAL CONCRETE PAVING	0.721 AC.
REQUIRED: 5% OF TOTAL PAVED PARKING LOT AREA	0.036 AC.
PROPOSED LANDSCAPE AREA	5.1%
0.037 AC.	
STREET YARD REQUIREMENTS	
TOTAL SITE=2.003 AC. (PROPOSED)	
15% REQUIRED LANDSCAPED AREAS	
STREET YARD AREA	1.293 AC.
REQUIRED: 50% OF REQUIRED LANDSCAPED AREA (15%) TO BE WITHIN STREET YARD = 7.5%	0.097 AC.
PROPOSED LANDSCAPE AREA	30.6%
0.396 AC.	
SITE TOTALS (2003 AC.)	
BUILDING IMPERVIOUS = 14,528 S.F. (0.334 AC.)	
SIDEWALK IMPERVIOUS = 2,023 S.F. (0.046 AC.)	
CONCRETE PAVING = 46,138 S.F. (1.067 AC.)	
LANDSCAPING = 24,565 S.F. (0.556 AC.)	
TOTAL = 87,254 S.F. (2.003 AC.)	

PARKING SUMMARY	
REQUIRED	PROPOSED
70 TOTAL (3 HC REQ.)	69 REGULAR 4 HANDICAP
TOTAL	73 SPACES



DATE	NO.	REVISION	APPROVAL

PLOTTING SCALE: 1" = 1'
 DATE PLOTTED: 12/17/03
 FILE: G:\1226\122612EXH04
 DRAWN BY: KLR
 DESIGNED BY: RJB
 REVIEWED BY: JBK
 PROJECT NO.: 1226-12.01

ECKERD'S
STATE HWY. 95 @ E LAKE DRIVE
TAYLOR, TEXAS
SCC DEVELOPMENT COMPANY, LLC

CONCEPTUAL
SITE PLAN - D

Bury+Partners
 Consulting Engineers and Surveyors
 Austin, Texas Tel 512/328-0011 Fax 512/328-0325
 Bury+Partners, Inc. ©Copyright 2003