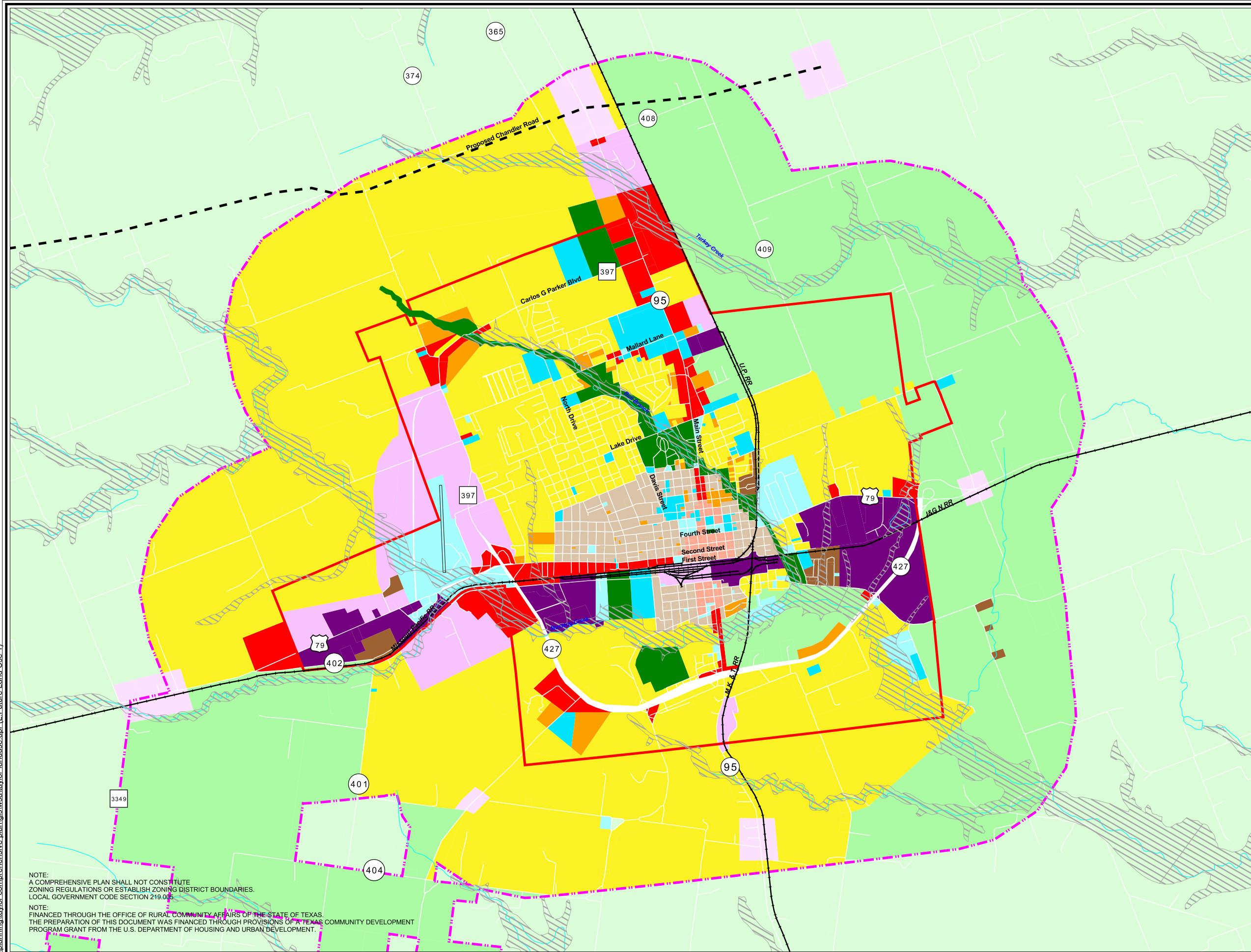
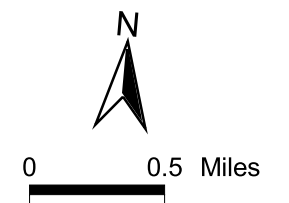




City of Taylor, Texas
Figure 4.2 A
2025 Future Land Use Plan
11-23-04

Legend

- Future Land Use**
- Agriculture/Open Space
 - Single Family
 - Multi Family
 - Manufactured Home
 - Commercial
 - Industrial
 - Institutional
 - Public
 - Park
 - Downtown
 - Downtown Neighborhood
 - Business Park
 - Gateway Commercial
 - Right Of Way
 - 100 Year Flood Plain
 - Outside Extraterritorial Jurisdiction
 - Corporate Limit
 - Extraterritorial Jurisdiction



NOTE:
 A COMPREHENSIVE PLAN SHALL NOT CONSTITUTE ZONING REGULATIONS OR ESTABLISH ZONING DISTRICT BOUNDARIES. LOCAL GOVERNMENT CODE SECTION 219.005.

NOTE:
 FINANCED THROUGH THE OFFICE OF RURAL COMMUNITY AFFAIRS OF THE STATE OF TEXAS. THE PREPARATION OF THIS DOCUMENT WAS FINANCED THROUGH PROVISIONS OF A TEXAS COMMUNITY DEVELOPMENT PROGRAM GRANT FROM THE U.S. DEPARTMENT OF HOUSING AND URBAN DEVELOPMENT.